

INSPIRED BY PURPOSE, GROUNDED IN INNOVATION

2024 IMPACT REPORT



SWAN IMPACT NETWORK

www.swanimpact.org

Empowering Founders, Driving Impact, Educating Investors

OUR MISSION

SWAN IMPACT NETWORK UNITES, EDUCATES, AND EMPOWERS FOUNDERS AND IMPACT INVESTORS WHO BELIEVE BOTH POSITIVE IMPACT AND STRONG FINANCIAL RETURN ARE EQUALLY VITAL.



INVESTING IN THE FUTURE, WITH PURPOSE

***"The world is shifting**—demanding urgent action on climate, health, and equity. Now more than ever, how we invest, innovate, and lead must reflect a deeper commitment to people and planet. Profit and purpose can—and must—move together.*

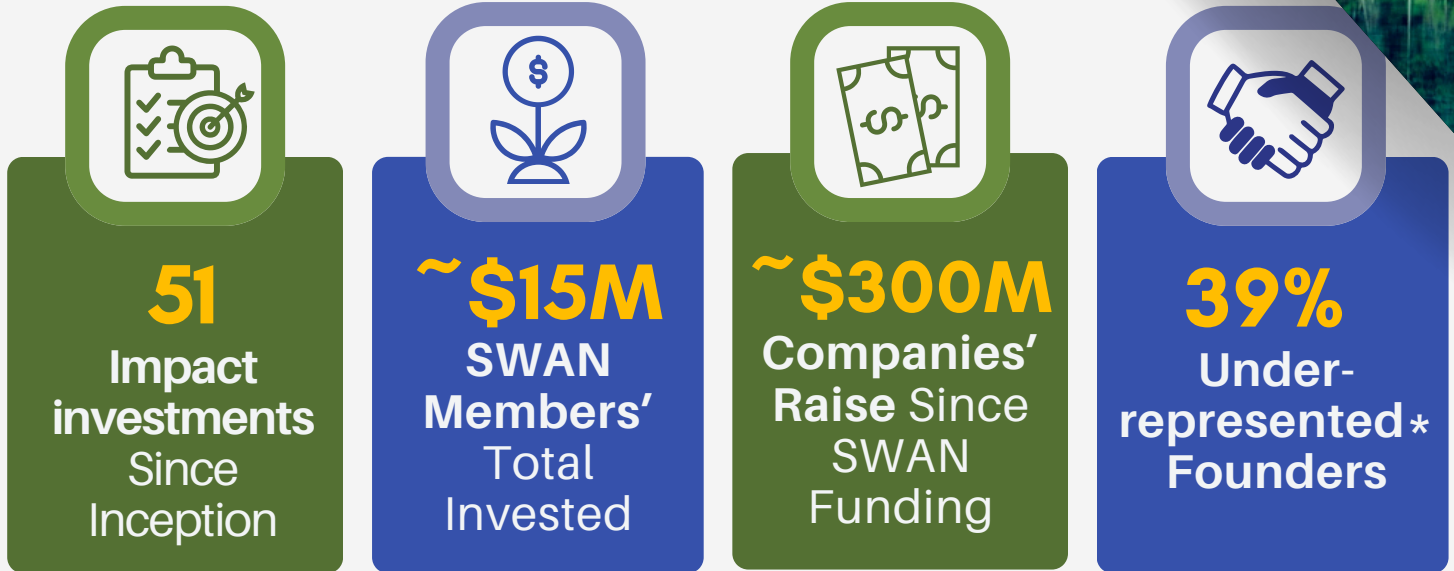
***At SWAN, we champion bold entrepreneurs** who are rethinking what's possible. Their breakthrough ideas tackle society's toughest challenges, and we invest in them to drive scalable impact and sustainable returns. Because doing good and doing well are not mutually exclusive.*

***To our investors and members:** You empower changemakers, fuel innovation, and help build a future we can all be proud of. **Thank you! And to those inspired to act,** we invite you to join a community investing in hope, courage, and lasting impact."*

- Suresh Sundarababu
Executive Director, SWAN Impact Network

IMPACT HIGHLIGHTS

INNOVATION UNLEASHED



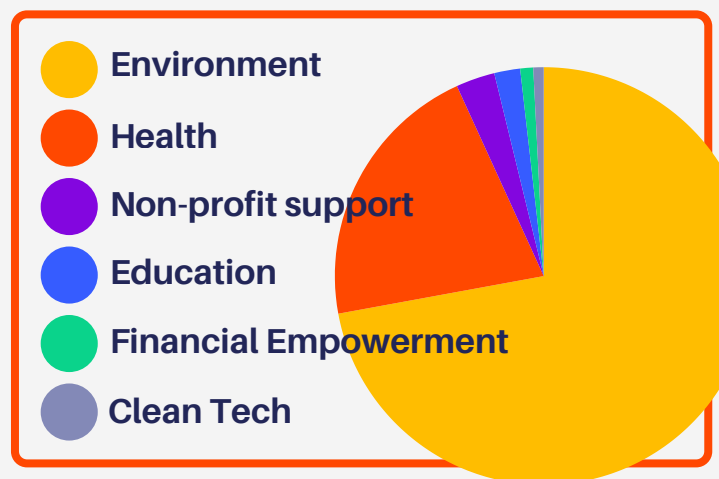
*SWAN defines the term "underrepresented" to include individuals originating from communities historically underrepresented in business and technology, including women, Black, LGBTQ, LatinX, and Native American communities.

OUR FOCUS



Impact Matters as much as Returns

OUR PORTFOLIO



Inspired by Purpose; Grounded in Innovation

IMPACT HIGHLIGHTS

COMMUNITY POWERED



3 SWAN Chapters
(Austin, Dallas, Houston)



9 States represented
+ Canada and Germany

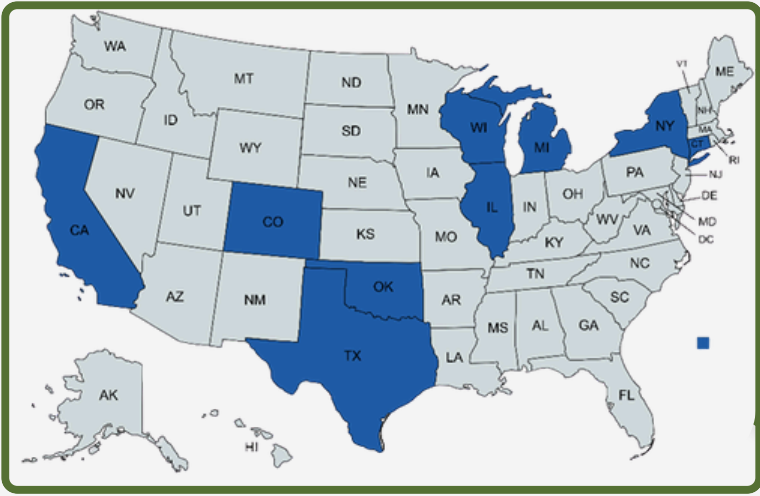


~1500 Hours
dedicated annually by SWAN members



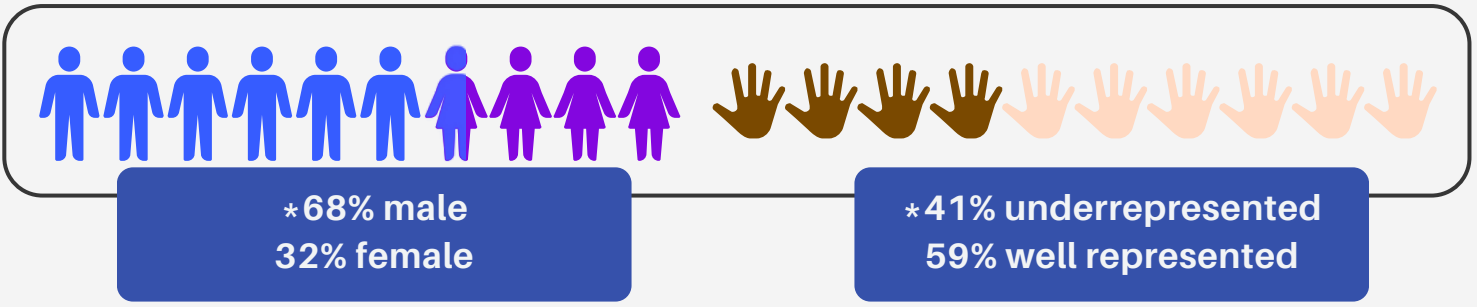
~30 Educational events
annually

SWAN MEMBER LOCATIONS



Swan members around the world including **Germany** and **Canada**!

SWAN MEMBER DIVERSITY



OUR INSPIRING ENTREPRENEURS



SNAPSHOT OF SWAN MEMBERS



FOUNDER TESTIMONIALS

*FROM A 2025 SURVEY OF SWAN'S PORTFOLIO COMPANIES



Sydney Robinson,
Co-Founder & CEO, Vessl Prosthetics

"SWAN's investment was instrumental in helping us attract funding from other investor groups. Their focus on impact and well-regarded reputation contributed to building trust in our mission among other investor groups. They also amplified our visibility by featuring Vessl on their social media, which helped us share our story with a broader audience and connect with values-aligned supporters."



VESSL'S Impact Goal: Improve mobility and comfort for amputees



Tomas Pinilla
COO, Capwell Services

"SWAN's investment was pivotal in allowing us to build our pilot unit and prove our technology's performance with customers. Beyond funding, their mentorship has been invaluable, and their clear, efficient investment process made them ideal partners. The unit we are about to deploy can capture up to 2,950 metric tons of CO2e annually, directly supporting our mission to reduce methane emissions in oil and gas operations."



CAPWELL SERVICES' Impact Goal:
Cutting greenhouse gases through methane capture.

FOUNDER TESTIMONIALS

*FROM A 2025 SURVEY OF SWAN'S PORTFOLIO COMPANIES



Raj Vable Founder & CEO, *Young Mountain Tea*

"As we launched India's first farmer-owned specialty tea factory, SWAN was one of our most engaged partners. Board member Sandeep Madhur became part of our team —supporting finance meetings, refining forecasting, and leading planning that improved cash flow. We're also grateful to Steve Maysonave and other SWAN investors for championing our story and helping attract others. SWAN's support went beyond funding—we're truly grateful for the partnership."



Young Mountain Tea's Impact Goal:
Build a sustainable future for
Himalayan farmers



Ashley Hamilton Co-Founder & CEO, *Aiki*

"Being involved with SWAN has been pivotal for our young company. Beyond capital, SWAN brought mentorship, guidance, community, and ongoing support as we brought our product to market to improve school safety. The experience was so impactful, we invited a SWAN member to join our board during diligence—regardless of funding. We would not be where we are today without the continued engagement of this incredible organization and its members."



AIKI'S Impact Goal: Reduce deaths
and injuries from Active Shooter Attacks



PHILANTHROPIC IMPACT FUND

DONATE TO PROMISING, PURPOSE-DRIVEN
STARTUP COMPANIES

WHAT IS THE SWAN PHILANTHROPIC IMPACT FUND?

SWAN Philanthropic Impact Fund allows donors to make tax-deductible charitable donations (starting at \$250) to for-profit startup companies. SWAN offers a holistic approach to investing in impact through the Angel Network and the Philanthropic Fund.

RETURNS ARE REINVESTED:

The SWAN Philanthropic Impact Fund is evergreen and regenerates, with all revenue going directly back to fund future grants and investments. Powered by Impact Assets.

Discover how you can help advance impact investing through SWAN's Philanthropic Fund. Contact us at associate@swanimpact.org to learn more.

\$75k invested via SWAN
Philanthropic Fund



"The SWAN Impact Network plays a critical role in supporting early stage entrepreneurs.

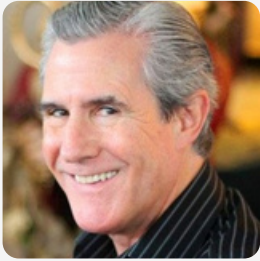
They are well positioned to support companies that are in the middle of commercialization and need a little extra bit of support to reach that next critical inflection point."

**-ANDREW MAXEY,
VARTEGA CEO**



HEAR FROM OUR MEMBERS

STEPHEN MAYSONAVE
Managing Partner,
Maysonave International



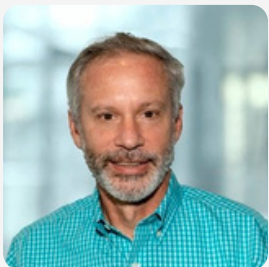
“Over the past seven years as a SWAN member, mentoring and working closely with founders and key executives of SWAN portfolio companies has been extraordinarily rewarding and has provided a tangible way for me to make a meaningful social impact.”

RAHEELA AHSAN
Founder/Managing
Attorney,
Ahsan Law Firm



“I joined SWAN as a young attorney to deepen my understanding of the due diligence and investment process. It has been an invaluable experience to collaborate on deal memos alongside experienced industry professionals, particularly knowing that the startups we support are creating a meaningful impact. Being part of SWAN has been both educational and deeply rewarding.”

JOHN JEFFERS
Founder/CEO,
Foreland Innovation



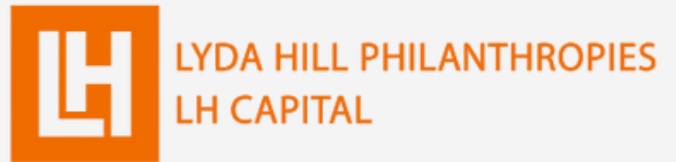
“I’ve enjoyed meeting new and interesting people — within the network, among co-investors, and throughout the startup community — and learning from all of them.”

KATY ROODENKO
Founder/CEO,
Max-IR Labs



“Being part of SWAN lets me share my expertise to support startups that align innovation with purpose, alongside a community that shares my values.”

WITH SPECIAL THANKS TO OUR DONORS & SPONSORS



Members/Partners:

Pegasus Park Water Cooler, Angel Capital Association, Cowtown Angels, New Mexico Angels, E8 Angels, MassChallenge, DivInc, SVP Austin and Dallas, Clean Energy Ventures, Second Day, Texoma Semiconductor Tech Hub, Arpa-H Customer Experience Hub, among others

THANK YOU FOR YOUR TIME



WWW.SWANIMPACT.ORG



[@SWANIMPACTNETWORK](https://www.instagram.com/SWANIMPACTNETWORK)



[@SWANIMPACTNETWORK](https://www.facebook.com/SWANIMPACTNETWORK)



[@SWANIMPACTNETWORK](https://www.linkedin.com/company/SWANIMPACTNETWORK)

Join the Movement. Drive the Mission.

**Click [HERE](#)
to get involved.**

Contact us at: associate@swanimpact.org

